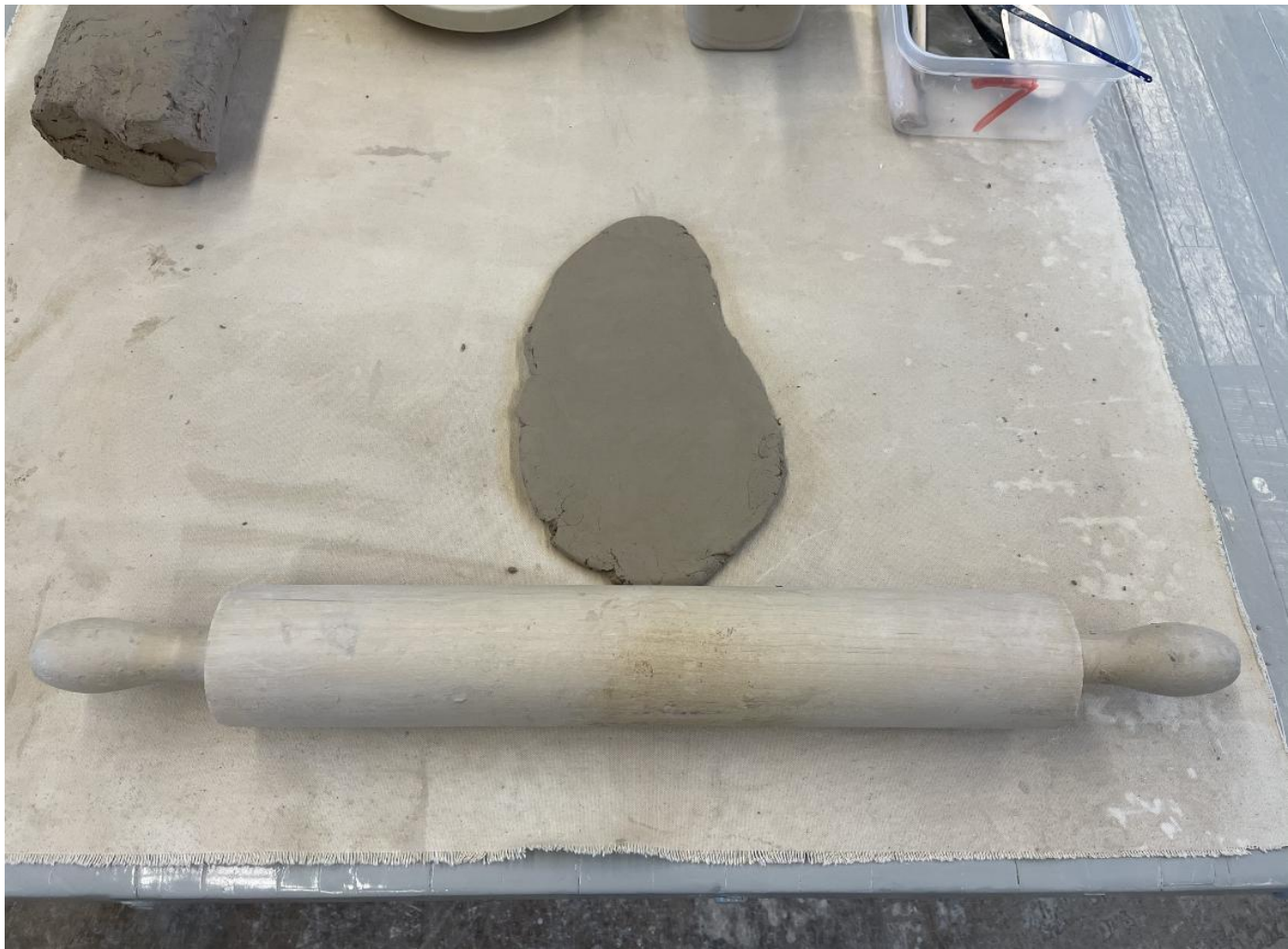
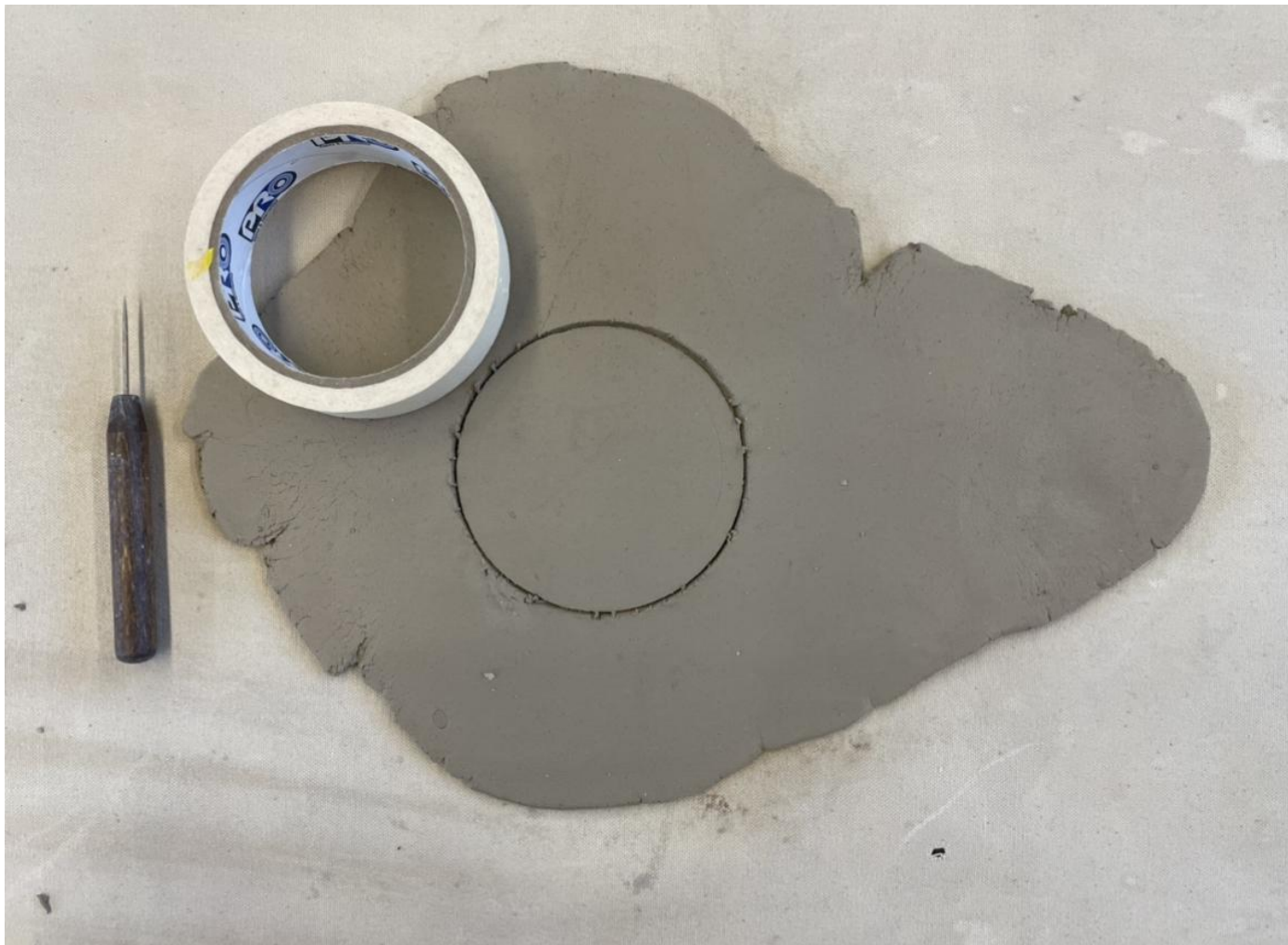


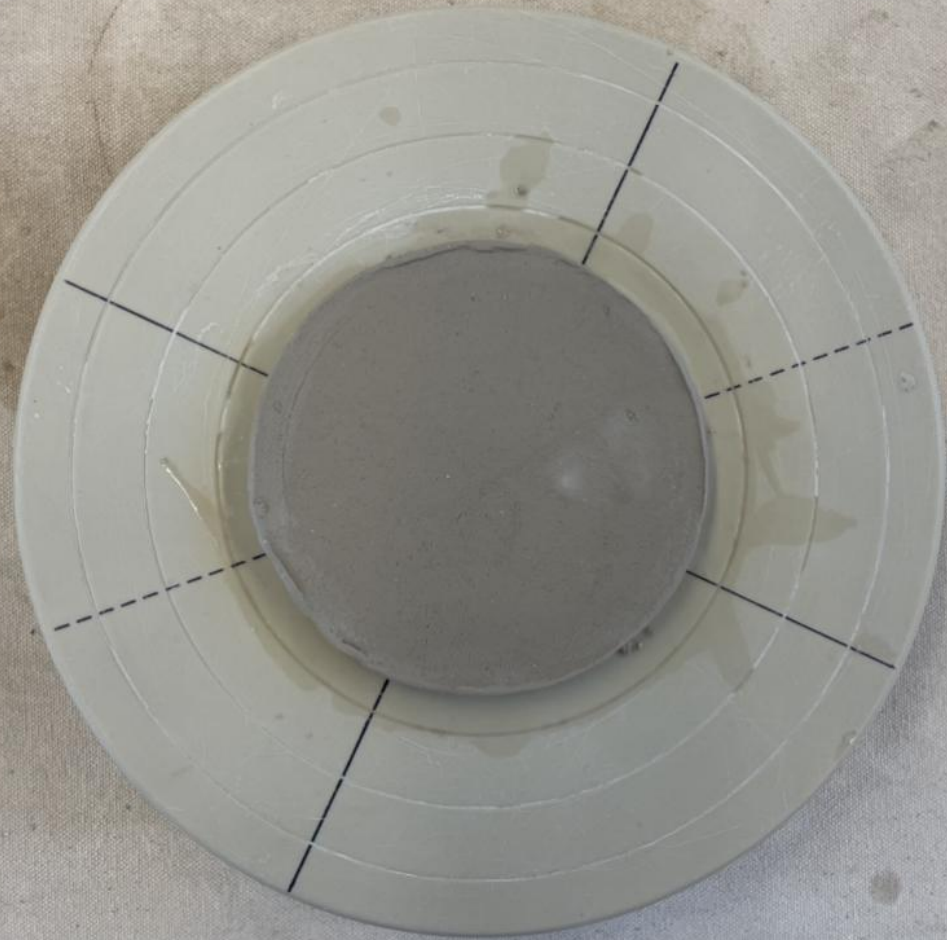
Coil Vessel

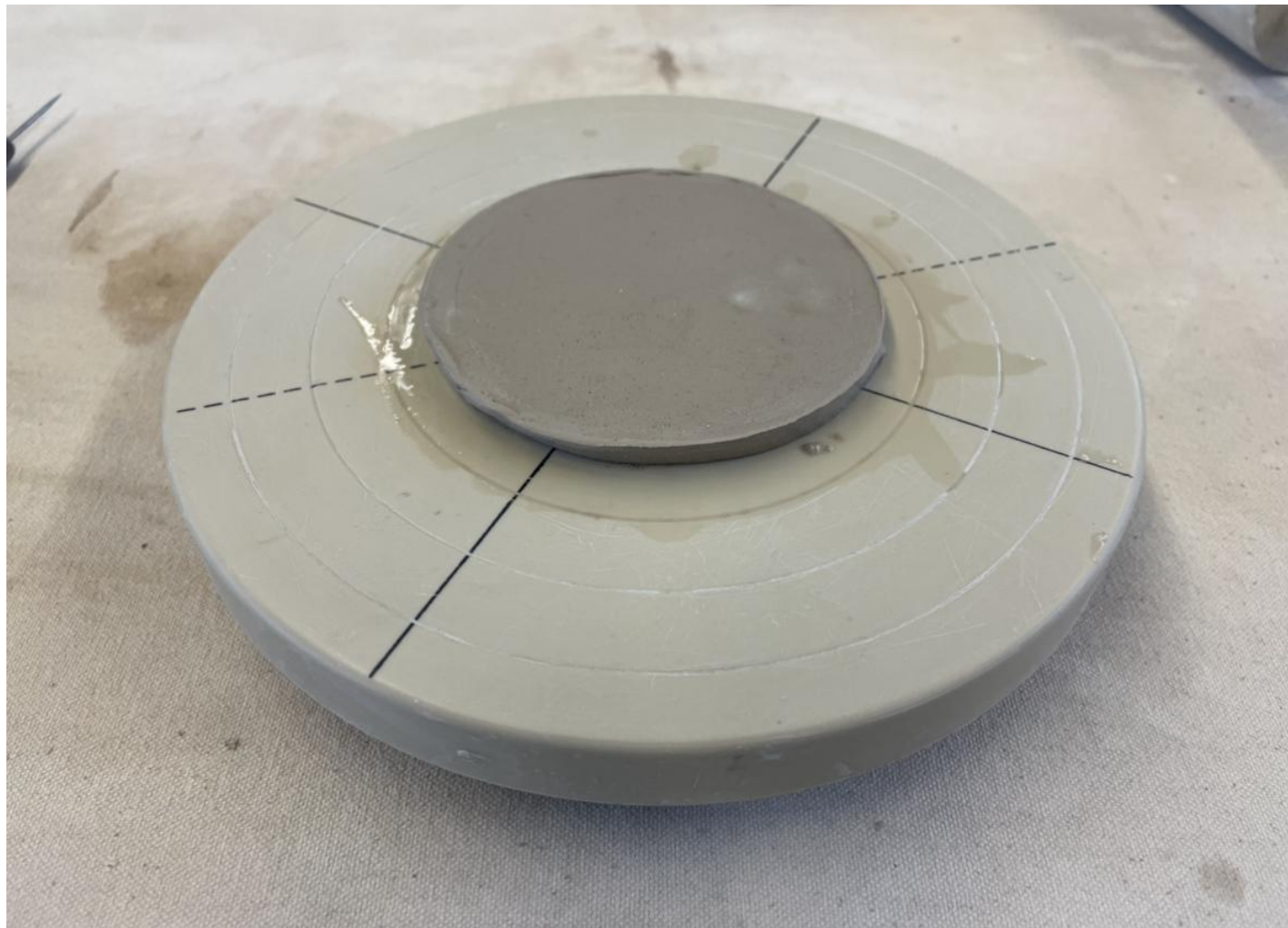


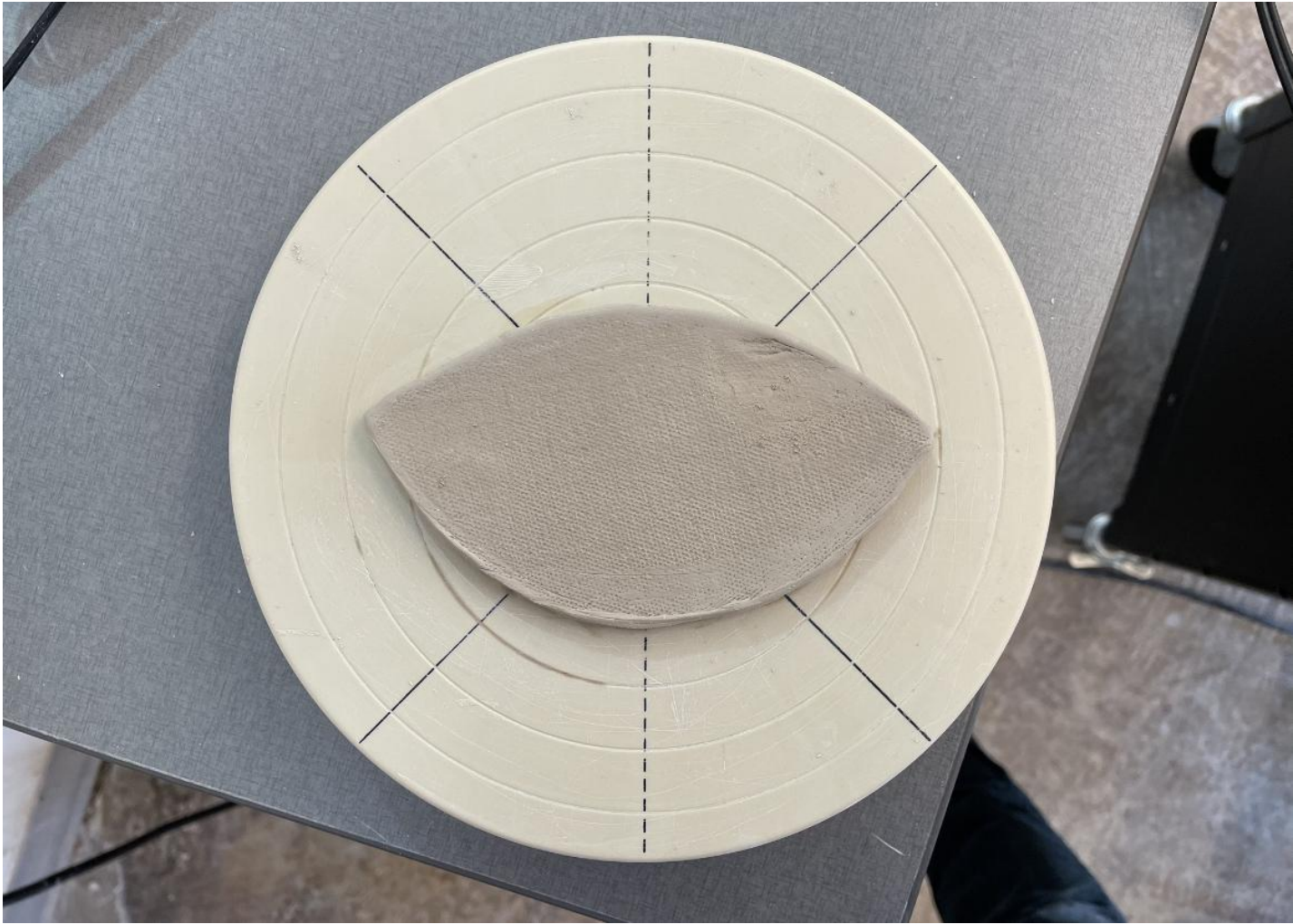


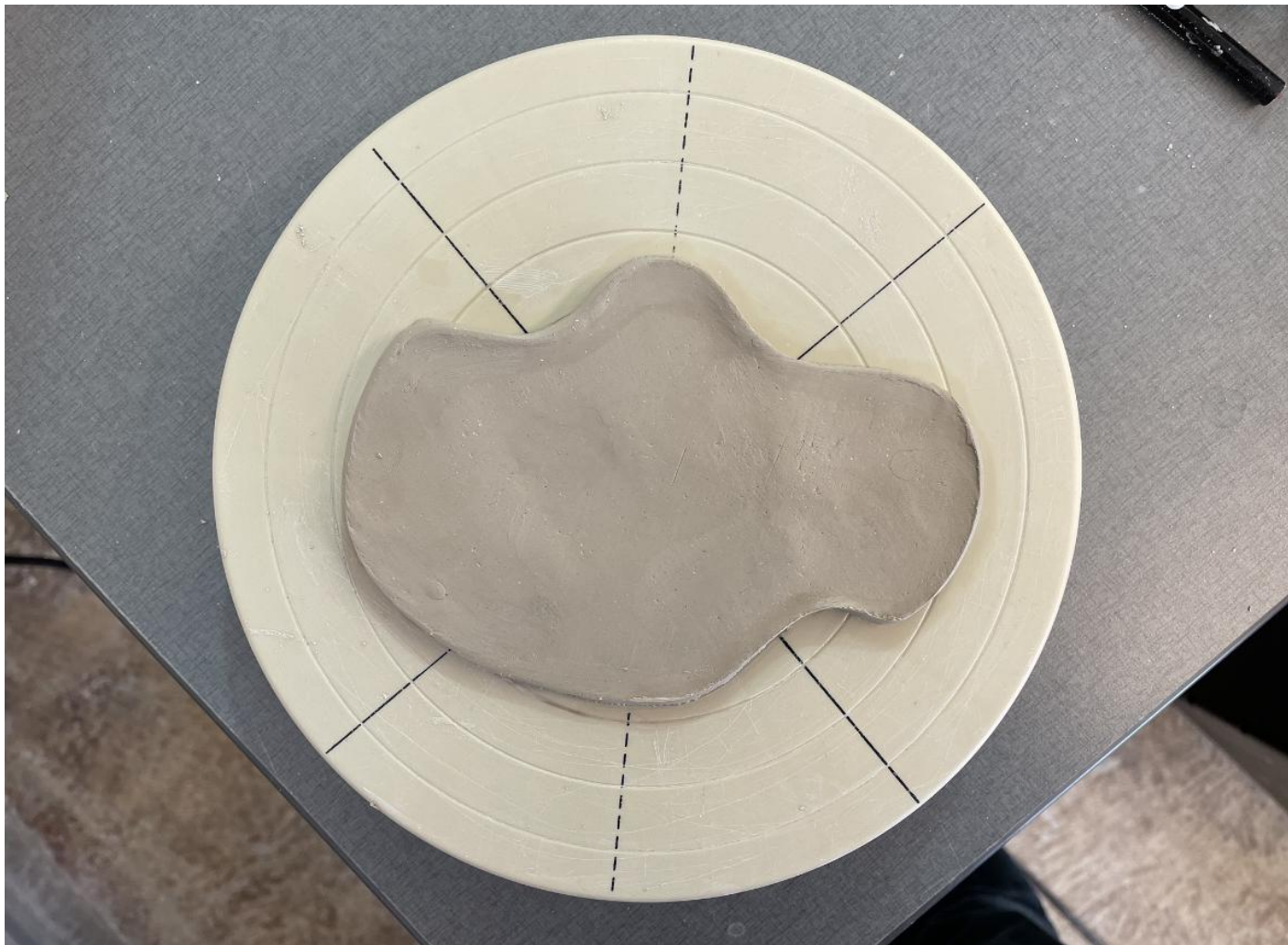












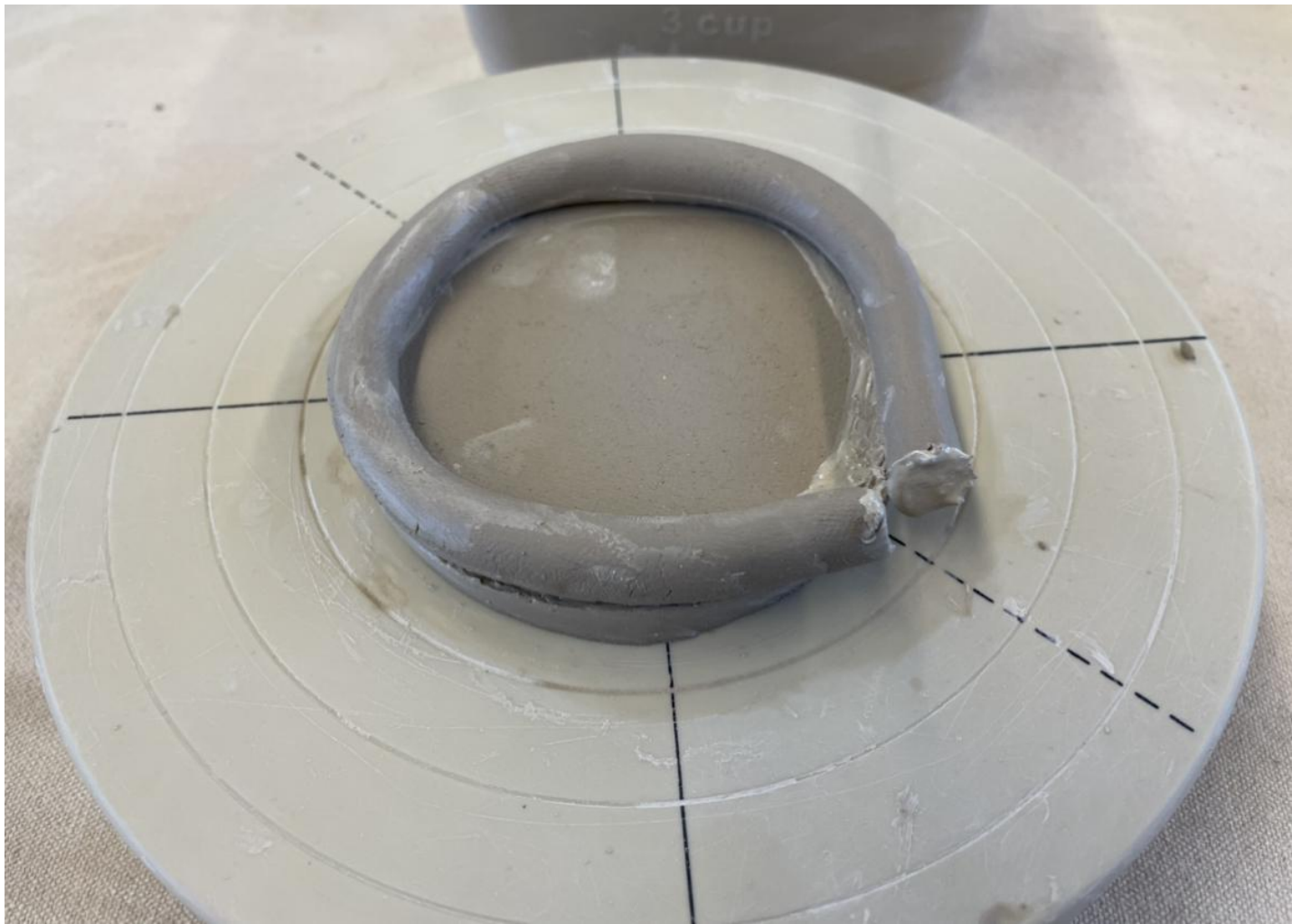


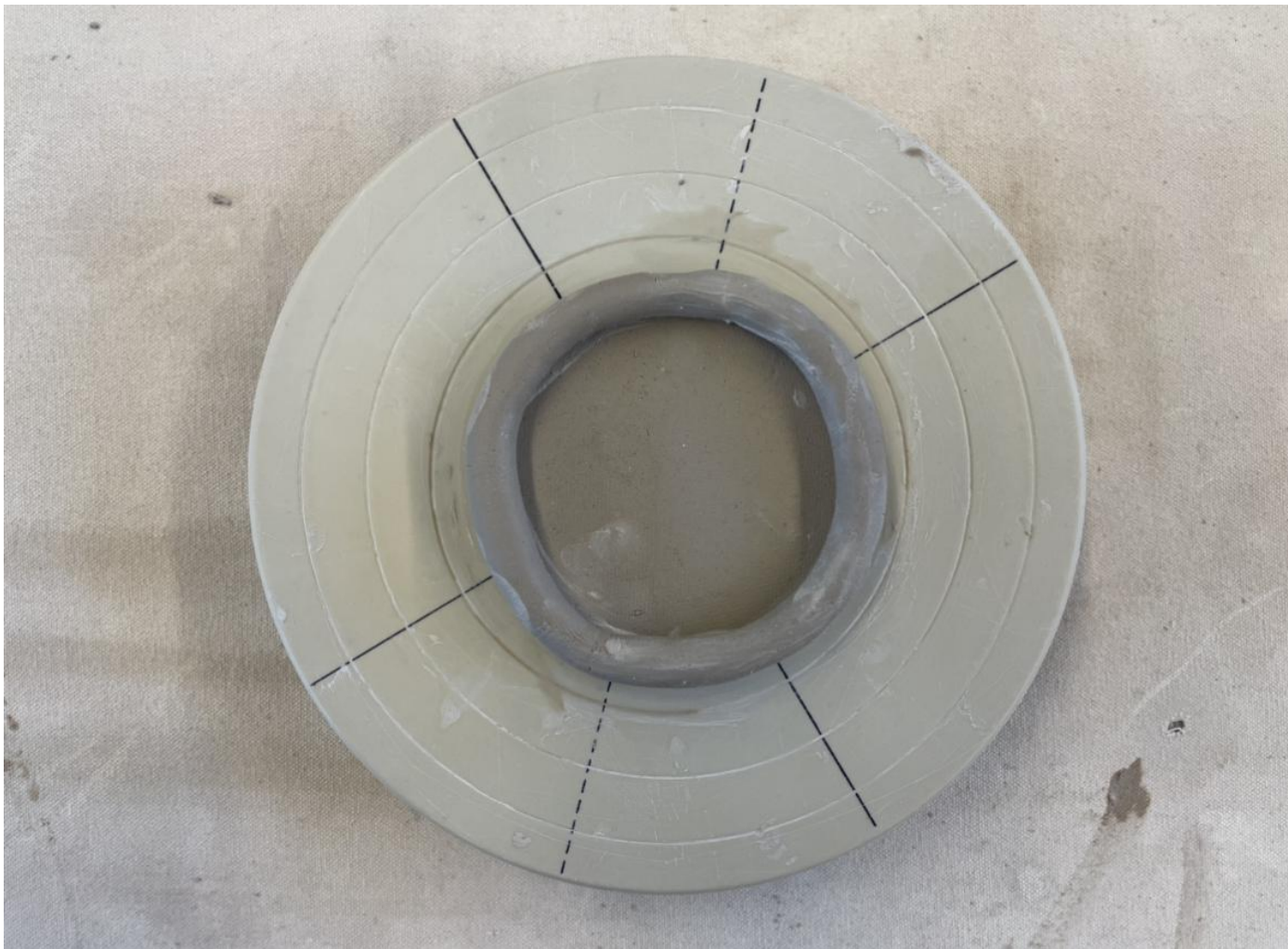






















Your base does NOT have to be a circle!

Your vessel does NOT have to be functional.

Remember the cardboard cut-out template I showed you (Optional).

If you chose to use the clay extruder, only make 2-3 coils at a time. Put them on a wooden board to carry them to your table.

Put your piece (on the banding wheel) into a black plastic bag before storing.

I'll be around to each table to check in.